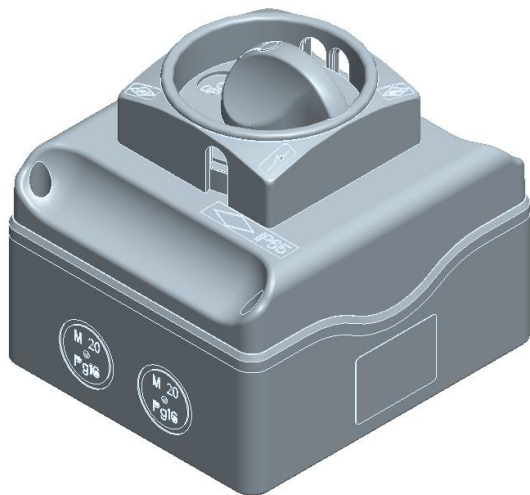


Cod. SB0323B110AL6

Standard and Approvals

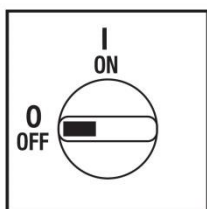
- Switch according to IEC/EN 60947-3



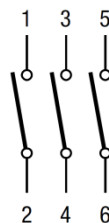
Technical characteristics

- ON-OFF 3P
- ABS double insulation thermoplastic enclosure
- Rated operational current In: 32A
- Rated thermal current Ith: 32A
- Rated insulation voltage Ui: 800V
- Positive opening double break contacts, silver alloy made
- Grey plate 48x48mm and black padlockable knob (max. 3 padlocks)
- Switching angle: 90°
- Cover interlock in "ON" position
- Front drive
- IP65 Protection degree
- Fixing enclosure: 4 screw at 80x98mm

Plate and positions



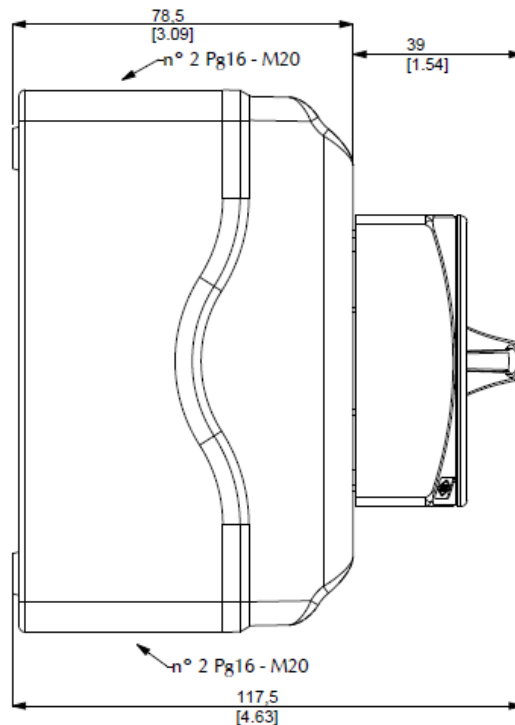
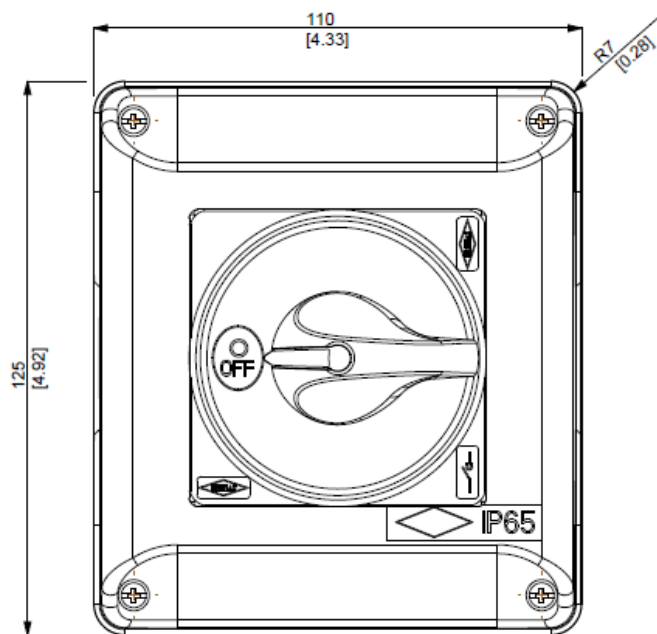
Electrical scheme



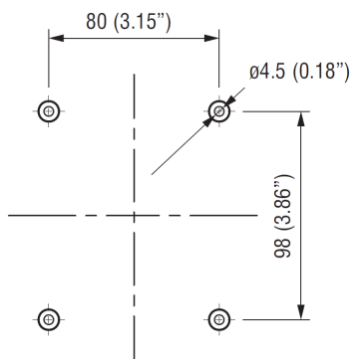
Cod. SB0323B110AL6

measures in mm (in)

Dimensions



Drilling templates



Cod. SB0323B110AL6

Technical data IEC 947-3 EN 60947-3			
Rated insulation voltage	Ui	V	800
Rated operating voltage	Ue	V	800
Rated impulse withstand voltage	Uimp	kV	8
Rated thermal current for open switch	Ith	A	32
Rated thermal current for enclosed switch	Ithe	A	32
Rated operation frequency		Hz	50/60
Power dissipation for each pole		W	1,3
Rated operating current Ie			
AC-21A Switching resistive loads, including moderate overloads	690V	Ie	A 32
AC-22A Switching of mixed resistive and inductive loads, including moderate overloads	690V	Ie	A 32
Rated operating power			
AC-23A Switching of motor loads or other highly inductive loads	400V	Kw (A)	11 (22)
	690V	Kw (A)	11 (16)
AC-3 Squirrel cage motors: starting, switching off motors during running	400V	Kw (A)	7,5 (14)
	690V	Kw (A)	7,5 (8)
Rated breaking capability in category AC-23A (cos φ=0,45)	400V	A	176
	690V	A	128
Short circuit protection			
Rated short time withstand current (1s)	Icw	A	400
Rated short-circuit make capacity	Icm	A	750
Rated conditional short-circuit current		kA	10
With fuses class gG	500V	A	32
Technical data UL/CSA (sec. UL508)			
General use voltage	Ue	V	600
General use current	600Vac	Ie	A 30
Rated operating power			
1 phase - 2 pole	120V	Hp/FLA	1,5 / -
	240V	Hp/FLA	3 / -
3 phase - 3 pole	200V	Hp/FLA	- / -
	240V	Hp/FLA	7,5 / 22
	480V	Hp/FLA	15 / 21
	600V	Hp/FLA	20 / 22
Line protection fuses (DS size 1: Class RK5, 600Vac, 200kA A.I.C.), (DS size 2: Class J, 600Vac)		A	30
Short Circuit Rating@600Vac		kA	5
Mechanical characteristics			
Mechanical life (120 cycles/hour)	Operations x10 ⁶		0,03
Connecting capability with flexible wires	Min-Max	mm ²	1,5 - 10
Connecting capability with solid wires	Min-Max	mm ²	1,5 - 16
Connecting capability with flexible wires	Min-Max	AWG	16/08
Connecting capability with solid wires	Min-Max	AWG	16/06
Terminal screw			M4
Screw tightening torque		Nm	1,7
		lbf-in	12
Protection degree IEC 529 EN 60529			
Terminals			IP20
Handles			IP66
Ambient conditions			
Operational ambient temperature		°C	-25 ÷ +55
Storage ambient temperature		°C	-25 ÷ +55
Withstand to constant humid according to IEC 60068			sec. IEC 60068-2-78
Withstand to cycling humid according to IEC 60069			sec. IEC 60068-2-30
Auxiliary contacts			
Rated insulation voltage	Ui	V	800
Rated thermal current for open switch	Ith	A	10
AC-15 Control of a.c electromagnetic loads	240V	A	3